

Łuéchogh Túé Newsletter

August 2020 Edition

CULTURE FOR OUR YOUTH

FCSS' FIRST YOUTH CULTURE CAMP BRINGS TRADITION AND KNOWLEDGE TO THE CHILDREN OF CLFNS

2

June In Review

- FCSS Hosts Thier First Youth Cultural Camp

4

Community News

- CLFN Gets a New Mental Wellness Facility and Fitness Centre
- Graveyard Clean Up

6

Department Updates

- Education Program Info
- Back to School Calanders
- Home Schooling Info
- Department Calanders

10

Community Support

- Firewood For Sale

FCSS Hosts Their First Annual Youth Culture Camp

July 27- 30, 2020

With the complete shutdown of schools and almost all summer activities cancelled, the FCSS department has stepped up to the plate and provided the kids of CLFNS with an outlet to learn about our traditional Dene way of life while still being able to enjoy the summer sun.



~ Competitors show off their "rig" building skills as the race to make a fire and boil fresh Labrador Tea.

During the week of July 27, the CLFNS, FCSS department held its first annual Youth Culture Camp along the shores of Jie Hochilai. (Berry Point). Children from across the Nation spent the week partaking in various workshops that focused on the traditional knowledge and practices of the Dene people.

The children learned firsthand how to harvest raw materials from the surrounding forest and turn them into fully functional birch bark

baskets. They mastered the art of fire making (using only surrounding materials) and had to compete in group competitions that showcased their newfound skills. Between the smoking of recently caught fish and collecting leaves for Labrador Tea the attendees were welcome to swim the cool waters just off the shore of Jie Hochilai and enabled them to enjoy the summer weather while learning important traditional life skills.

Elders in attendance, guided the children on the sacred tradition of offering tobacco and giving thanks for what the creator has provided.

In a modern world where Ipads are king and most kids have never seen a home phone, these Culture Camps are essential in keeping traditional knowledge and customs alive.

This was the first annual camp and the organizers look forward to next year.

Continued on page 3.

FCSS Hosts Their First Annual Youth Culture Camp (cont)



~ Fresh fish drying inside the smoking tent.



~ Freshly picked leaves for Labrador Tea.



~ "Rat Root" harvested from the shores of the Medley River, one of the strongest traditional medicines known to exist.

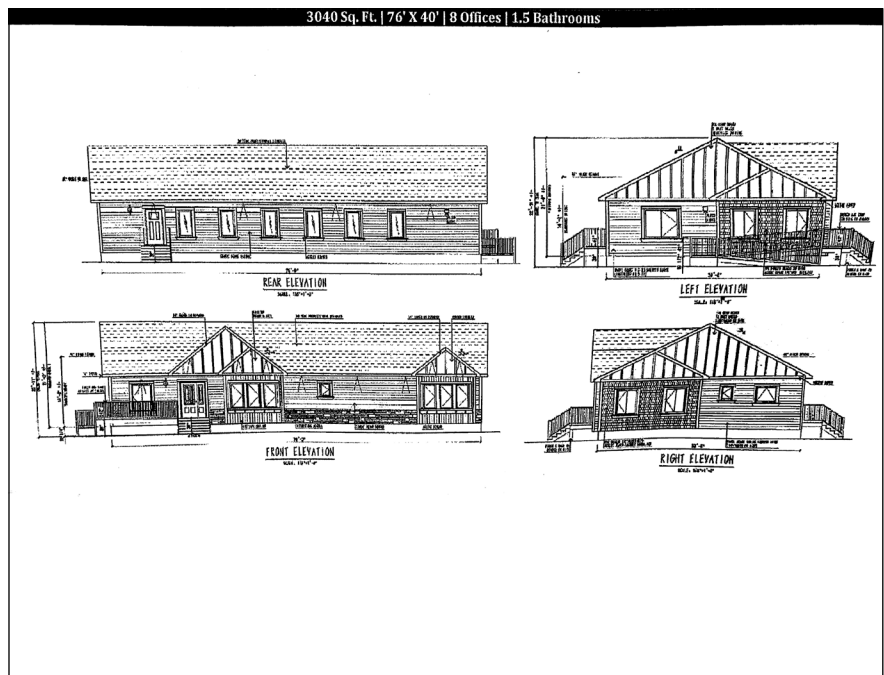
CLFNS Opening a New Mental Wellness Facility



~ The two sections of the Mental Wellness building during assembly (above) and the full schematic of the complete building (below).

Mental wellness is and always has been a serious concern for the people of Cold Lake First Nations. In the past six months COVID-19 has caused skyrocketing numbers of depression and suicide rates nationally and globally. Thankfully the Health Department has acquired a new facility to help with these pressing issues.

Once fully operational, the eight office Mental Wellness facility will focus on specialized mental health care and the developmental needs of the members of our community. In the interim, it will be utilized as a safe isolation facility in the instance of a COVID-19 outbreak.



CLFNS Fitness Centre Renovations Almost Complete



~The new Fitness Centre (formerly Dene Tech) just before being resided.

Amongst the busy construction of the new waterline and the new Mental Wellness facility, the old Dene Tech building has received a major facelift. Once complete, it will be the home of the new Cold lake First Nations Fitness Centre.

No longer will members have to travel to the neighbouring towns to get a good set in, the centre be a complete gym that aims to keep CLFNS members healthy and active.

Graveyard Gets Well Needed Clean Up

A large (and well needed) clean up of the graveyard was made this past month. Overgrown grass and brush was trimmed, mounds were carefully leveled and bare spots reseeded. Decayed ornaments and flowers were respectfully relocated (with consent) and now the final resting place of our cherished loved ones remains tidy and peaceful.

If you have any family or loved ones for whom you've laid flowers, now would be an ideal time to freshen them up in honour of their memory.



~A bronze cross dating back almost 100 years, sits guard amongst the more modern grave markers.

CLFN Education Program Information

Applications for the 2020-21 school year K-12 programs will start processing after **September 1**.

The following are the programs in effect:

1. School Supply Reimbursement (Up to \$200)
2. School Fee (Up to \$150)
3. School Field Trip (Up to \$100)

*please ensure you have all the required information requested on the application.

All applications can be found on the CLFN website or can be requested at education@clfn.com
If you have questions, you can contact Melissa Scanie (780)594-7183 ext.262



LE GOFF SCHOOL 2020/2021 ACADEMIC CALENDAR



Instruction: 53 days—Term 1 (Aug 31—Nov 19)
69 days—Term 2 (Nov 23—Mar 18)
56 days—Term 3 (Mar 22—June 18)
Instruction = 178 days

August 2020

Sun	Mon	Tue	Wed	Thu	Fri	Sat
						1
2	3	4	5	6	7	8
9	10	11	12	13	14	15
16	17	18	19	20	21	22
23	24	25	26	27	28	29
30	31					

STUDENT DAYS 1 STAFF DAYS 4

September 2020

Sun	Mon	Tue	Wed	Thu	Fri	Sat
		1	2	3	4	5
6	7	8	9	10	11	12
13	14	15	16	17	18	19
20	21	22	23	24	25	26
27	28	29	30			

STUDENT DAYS 20 STAFF DAYS 21

October 2020

Sun	Mon	Tue	Wed	Thu	Fri	Sat
				1	2	3
4	5	6	7	8	9	10
11	12	13	14	15	16	17
18	19	20	21	22	23	24
25	26	27	28	29	30	31

STUDENT DAYS 19 STAFF DAYS 20

November 2020

Sun	Mon	Tue	Wed	Thu	Fri	Sat
1	2	3	4	5	6	7
8	9	10	11	12	13	14
15	16	17	18	19	20	21
22	23	24	25	26	27	28
29	30					

STUDENT DAYS 19 STAFF DAYS 20

December 2020

Sun	Mon	Tue	Wed	Thu	Fri	Sat
		1	2	3	4	5
6	7	8	9	10	11	12
13	14	15	16	17	18	19
20	21	22	23	24	25	26
27	28	29	30	31		

STUDENT DAYS 14 STAFF DAYS 14

January 2021

Sun	Mon	Tue	Wed	Thu	Fri	Sat
					1	2
3	4	5	6	7	8	9
10	11	12	13	14	15	16
17	18	19	20	21	22	23
24	25	26	27	28	29	30
31						

STUDENT DAYS 19 STAFF DAYS 20

February 2021

Sun	Mon	Tue	Wed	Thu	Fri	Sat
	1	2	3	4	5	6
7	8	9	10	11	12	13
14	15	16	17	18	19	20
21	22	23	24	25	26	27
28						

STUDENT DAYS 17 STAFF DAYS 18

March 2021

Sun	Mon	Tue	Wed	Thu	Fri	Sat
	1	2	3	4	5	6
7	8	9	10	11	12	13
14	15	16	17	18	19	20
21	22	23	24	25	26	27
28	29	30	31			

STUDENT DAYS 21 STAFF DAYS 23

April 2021

Sun	Mon	Tue	Wed	Thu	Fri	Sat
				1	2	3
4	5	6	7	8	9	10
11	12	13	14	15	16	17
18	19	20	21	22	23	24
25	26	27	28	29	30	

STUDENT DAYS 16 STAFF DAYS 16

May 2021

Sun	Mon	Tue	Wed	Thu	Fri	Sat
						1
2	3	4	5	6	7	8
9	10	11	12	13	14	15
16	17	18	19	20	21	22
23	24	25	26	27	28	29
30	31					

STUDENT DAYS 19 STAFF DAYS 19

June 2021

Sun	Mon	Tue	Wed	Thu	Fri	Sat
		1	2	3	4	5
6	7	8	9	10	11	12
13	14	15	16	17	18	19
20	21	22	23	24	25	26
27	28	29	30			

STUDENT DAYS 13 STAFF DAYS 16

MONTH	STUDENT	STAFF
August	1	4
September	20	21
October	19	20
November	19	20
December	14	14
January	19	20
February	17	18
March	21	23
April	16	16
May	19	19
June	13	16

TOTAL STUDENT DAYS

178

A DAY IN LIEU OF AN EVENING OF PARENT/TEACHER INTERVIEWS

CLASSES START/RESUME/END

STAFF DEVELOPMENT—NO SCHOOL FOR STUDENTS

NO SCHOOL STAFF & STUDENTS

TOTAL STAFF DAYS

191



Northern Lights Public Schools

2020-2021 Calendar

Approved: 15/01/2020

August						
S	M	T	W	T	F	S
						1
2	3	4	5	6	7	8
9	10	11	12	13	14	15
16	17	18	19	20	21	22
23	24	25	26	27	28	29
30	31					
I 0						O 3

27 to 31 - Organizational Days

September						
S	M	T	W	T	F	S
		1	2	3	4	5
6	7	8	9	10	11	12
13	14	15	16	17	18	19
20	21	22	23	24	25	26
27	28	29	30			
I 20						O 21

1 - First Day of Class

7 - Labour Day

25 - IPP Day

October						
S	M	T	W	T	F	S
				1	2	3
4	5	6	7	8	9	10
11	12	13	14	15	16	17
18	19	20	21	22	23	24
25	26	27	28	29	30	31
I 19						O 20

9 - Family Friday

12 - Thanksgiving

26 - System Day

November						
S	M	T	W	T	F	S
1	2	3	4	5	6	7
8	9	10	11	12	13	14
15	16	17	18	19	20	21
22	23	24	25	26	27	28
29	30					
I 19						O 20

11 - Remembrance Day

20 - Family Friday / In Lieu of PT Interviews

December						
S	M	T	W	T	F	S
		1	2	3	4	5
6	7	8	9	10	11	12
13	14	15	16	17	18	19
20	21	22	23	24	25	26
27	28	29	30	31		
I 13						O 13

4 - Family Friday

21 to 31 - Christmas Break

January						
S	M	T	W	T	F	S
					1	2
3	4	5	6	7	8	9
10	11	12	13	14	15	16
17	18	19	20	21	22	23
24	25	26	27	28	29	30
31						
I 19						O 19

1 - New Year's Day

15 - Family Friday

29 - End of Semester 1

February						
S	M	T	W	T	F	S
	1	2	3	4	5	6
7	8	9	10	11	12	13
14	15	16	17	18	19	20
21	22	23	24	25	26	27
28						
I 16						O 18.5

1 - Start of Semester 2

10 - PD Day (am)

11 & 12 - ATA Conference

15 - Provincial Family Day

March						
S	M	T	W	T	F	S
	1	2	3	4	5	6
7	8	9	10	11	12	13
14	15	16	17	18	19	20
21	22	23	24	25	26	27
28	29	30	31			
I 21						O 22

5 - Family Friday

19 - Family Friday / In Lieu of PT Interviews

April						
S	M	T	W	T	F	S
				1	2	3
4	5	6	7	8	9	10
11	12	13	14	15	16	17
18	19	20	21	22	23	24
25	26	27	28	29	30	
I 15						O 15

2 - Good Friday

5 to 9 - Spring Break

30 - Family Friday

May						
S	M	T	W	T	F	S
						1
2	3	4	5	6	7	8
9	10	11	12	13	14	15
16	17	18	19	20	21	22
23	24	25	26	27	28	29
30	31					
I 19						O 19

21 - Family Friday

24 - Victoria Day

June						
S	M	T	W	T	F	S
	1	2	3	4	5	
6	7	8	9	10	11	12
13	14	15	16	17	18	19
20	21	22	23	24	25	26
27	28	29	30			
I 19						O 20

25 - Last Day for Students

28 - Last Day for Staff

First/Last Day of Classes

Staff Only Days

Students and Staff Off

Grades 1-9: 5 hrs, 23 mins of instruction per day = 969 hours per year
 Grades 10-12: 5 hrs, 40 mins of instruction per day = 1,020 hours per year

	Sem 1	Sem 2	Total
Instructional Days (I)	90	90	180
Operational Days (O)	96	94.5	190.5



Official DIVISION SCHOOL CALENDAR 2020-2021

AUGUST 2020

S	M	T	W	T	F	S
						1
2	3	4	5	6	7	8
9	10	11	12	13	14	15
16	17	18	19	20	21	22
23/30	24	25	26	27	28	29

I = 0

SEPTEMBER 2020

S	M	T	W	T	F	S
	31	1	2	3	4	5
6	7	8	9	10	11	12
13	14	15	16	17	18	19
20	21	22	23	24	25	26
27	28	29	30			

I = 20

OCTOBER 2020

S	M	T	W	T	F	S
				1	2	3
4	5	6	7	8	9	10
11	12	13	14	15	16	17
18	19	20	21	22	23	24
25	26	27	28	29	30	31

I = 19

NOVEMBER 2020

S	M	T	W	T	F	S
1	2	3	4	5	6	7
8	9	10	11	12	13	14
15	16	17	18	19	20	21
22	23	24	25	26	27	28
29	30					

I = 19

DECEMBER 2020

S	M	T	W	T	F	S
		1	2	3	4	5
6	7	8	9	10	11	12
13	14	15	16	17	18	19
20	21	22	23	24	25	26
27	28	29	30	31		

I = 14

JANUARY 2021

S	M	T	W	T	F	S
					1	2
3	4	5	6	7	8	9
10	11	12	13	14	15	16
17	18	19	20	21	22	23
24/31	25	26	27	28	29	30

I = 19

Semester 1 = 91

FEBRUARY 2021

S	M	T	W	T	F	S
	1	2	3	4	5	6
7	8	9	10	11	12	13
14	15	16	17	18	19	20
21	22	23	24	25	26	27
28						

I = 17

MARCH 2021

S	M	T	W	T	F	S
	1	2	3	4	5	6
7	8	9	10	11	12	13
14	15	16	17	18	19	20
21	22	23	24	25	26	27
28	29	30	31			

I = 22

APRIL 2021

S	M	T	W	T	F	S
				1	2	3
4	5	6	7	8	9	10
11	12	13	14	15	16	17
18	19	20	21	22	23	24
25	26	27	28	29	30	

I = 16

MAY 2021

S	M	T	W	T	F	S
						1
2	3	4	5	6	7	8
9	10	11	12	13	14	15
16	17	18	19	20	21	22
23/30	24	25	26	27	28	29

I = 19

JUNE 2021

S	M	T	W	T	F	S
		1	2	3	4	5
6	7	8	9	10	11	12
13	14	15	16	17	18	19
20	21	22	23	24	25	26
27	28	29	30			

I = 18

Semester 2 = 92

LAKELAND ROMAN CATHOLIC SEPARATE SCHOOL DIVISION

183	Instructional Days
3	Organizational Days
3	Institute/Convention Days
2	Parent/Teacher Interviews
1	Faith Development Day
3	PD/Collaborative Planning Days
1	IPP Day
196	Operational Days

- Aug. 27 Faith Development Day
- 28 Organizational Day
- 31 Organizational Day

- Sept. 1 Classes Begin for Students
- 7 Labour Day
- 25 No School (District PD)
- 16/30 – Early Dismissal for PLCs

- Oct. 9 No School (IPP Day)
- 12 Thanksgiving Day
- 26 No School (LCSD Collaborative Day)
- 21 – Early Dismissal for PLCs

- Nov. 11 Remembrance Day
- 20 No School (In Lieu of PTI)
- 4/18 – Early Dismissal for PLCs

- Dec. 19-31 Christmas Holidays
- 2/16 – Early Dismissal for PLCs

- Jan. 1-3 Christmas Holidays
- 4 Classes Resume
- 29 No School (PD/CP)
- 13/27 – Early Dismissal for PLCs

- Feb. 1 New Semester Begins
- 11-12 No School (ATA Convention)
- 15 Provincial Family Day
- 10/24 – Early Dismissal for PLCs

- Mar. 19 No School (In Lieu of PTI)
- 10/24 – Early Dismissal for PLCs

- Apr. 2 Good Friday
- 5 Easter Monday
- 2-11 Easter Break
- 14/28 – Early Dismissal for PLCs

- May 21 No School (PD/CP)
- 24 Victoria Day
- 12/26 – Early Dismissal for PLCs

- June 4 No School (PD/CP)
- 25 Students' Last Day
- 28 Organizational Day/Teachers' Last Day
- 9 – Early Dismissal for PLCs

Home Education

Background

The Division believes the parent has a right to choose Home Education as an alternative method of schooling for their child(ren). This option for parents and their children is available in partnership with the neighbourhood school and the Alberta Distance Learning Centre.

Procedures

1. Where the choice of Home Education is exercised, the Division will assume a supportive role to the parents to ensure the student's access to resources and to ensure satisfactory student achievement.
2. The student must be enrolled in a full-time program under the supervision of a host school. Students in grades 1 to 9 must register before September 30 in any school year. Students enrolled in a high school program must do so in consultation with a high school counselor or one of the Outreach programs.
3. Students enrolled in a home schooling program apply for and receive distance education courses. The courses are divided up into modules. Each module represents a distinct learning concept or topic that is required to complete the course. The number of modules varies according to the course subscribed for, but eight (8) is not an unusual number. When a student has completed a module, it is usually mailed away for evaluation. The instructions for this are contained in the parent package. When all the modules are complete and have been evaluated, the student is ready to write the final exam.
4. A learning plan which meets the Alberta Program of Studies outcomes must be developed for each student. Home school parents and students are to contact the Principal of their host school to develop a learning plan. Included in the learning plan are timelines, course selection and reporting standards. The Division will receive a nominal yearly grant per student from the provincial government and schools may pay for a significant portion of the student's planned program, not exceeding the funded amount. Such a plan must include the requirements of daily assignments and a commitment to at least 30 hours of study per week.
5. Schools may be able to provide textbooks, library access, or supplemental support for home school students. This is arranged on an individual basis and may involve additional costs. In some cases, students may arrange for a blended home school program that gives the student the opportunity to take selected school courses and/or participate in extra-curricular activities. Such arrangements are at the discretion of the Principal.
6. The parent must commit to attend meetings and submit program reports to the host school.
7. Exams will be sent to the host school after the last assignment in the course has been received. A teacher or administrator will supervise the exam. If students are writing a diploma exam during the summer, they must register at one of the test writing centres. Bonnyville High School (780-826-336) or J.A. Williams High School in Lac La Biche (780-623-4271).
8. The student must write provincial achievement and diploma examinations as appropriate.
9. The Division operates a summer school program for high school students. Home school students are welcome to register for courses during the summer term.
10. The Superintendent believes every Division has a responsibility to support its own Home Education rate payers and the Division will act as a willing, non-resident Board for Home Education programs only in circumstances where there is concurrence and agreement from the resident Board.
11. More detailed home schooling program information can be found in the Home Schooling section posted in the NLSD website
<http://www.nlsd.ab.ca/HomeSchool/index.html>

St. Paul Trip For Status Card Applications

Aug 12, 2020

8:30 am from the Admin Building

For more information contact **Roberta Nest** @ 780-815-0346

Na?ídeli Zae Flying Moon August

2020

Denesūline Language and Culture

Flying Moon

NOTE:

Covid 19 protocols will be adhered to in all our activities, such as physical distancing, hand sanitizing, temperature taking upon arrival, time in/out, and face masks will be provided.

OFFICE HOURS:

Mon – Thurs 8:30 am - 4:30 pm Fri 8:30 am - 2:00 pm

Telephone: 780-594-7168; Cell: 780-545-9073

E-mail: lynda.minoose@clfn.com or mariah.palnrussell@clfn.com



Dzík'e	Dzík'ere	Nakedzjine	Tahdzjine	Djdzine	tuets'eldeli Dzine	Dzj't'azi
						1
2	3 Heritage Day- Office Closed	4 Water and Canoe Safety	5 Water and Canoe Safety	6 Water and Canoe Safety	7	8
9	10	11 Elder Dictionary Meeting English Bay Center 9 am to 3 pm	12 Elder Dictionary Meeting English Bay Center 9 am to 3 pm	13	14	15
16	17	18	19	20	21	22
23/30	24/31	25	26	27	28	29

FIREWOOD FOR SALE

SPLIT/CUT: POPLAR \$120 PER CORD



SPRUCE/FIR/PINE/TAM MIX \$150 PER CORD

1.3QF CAMPFIRE BUNDLES AVAILABLE (CALL FOR PRICING)



MONDAY TO FRIDAY 9-4
OFFICE PHONE: 780-594-0866

Emergency Contact List

HEALTH LINK
DIAL 811

POLICE EMERGENCY CALL 911

Cold Lake R.C.M.P.
24 Hours 780-594-3301
Office Hours 780-594-3302

Victims Services
Dave Zimmerman 780-594-3302 ext.3

Cold Lake Ambulance Authority
780-594-6674

Cold Lake Healthcare Centre
780-639-3322

Bonnyville Health Centre
780-826-3311

CLFN Emergency Management
Roy Dell 780-594-7184

CLFN Health Centre
780-594-2473

Dene Wellness
780-594-1471

PUBLIC WORKS
780-594-1073

Dangerous Goods
24 Hours 1-800-272-9600

Poison Centre 24 Hours
1-800-332-1414

CANADA SUICIDE PREVENTION
1-833-456-4566 OR TEXT 45645

Power Outages Atco Electric
1-800-668-5506

Gas Emergencies Northeast Gas
780-826-4002