

Łuéchogh Túé

# Newsletter

October 2025

# A MYSTERY OF GRAVE CONCERN..

RECENT GROUND PENETRATING RADAR SEARCH  
UNEARTHIS MORE QUESTIONS THAN ANSWERS

2

#### In-Depth

- Cemetery  
Mystery

4

#### Community News

- Information Session  
Update
- CLFNS Joins Financial  
Market

10

#### Department Updates

- Haunted House
- Elder's Society Meeting

12

#### Community Support

- Portage BBQ
- Job Fair

---

## GPR Survey Brings New Insights and a Deeper Mystery to LeGoff Cemetery

---

**Our burial grounds hold many untold stories — from reports of a possible mass grave linked to the 1918 Spanish Flu pandemic, to the recent discovery of approximately 100 unmarked graves in our cemetery. Today, with the help of modern technology, we are beginning to peel back the layers of time and rediscover the long-lost resting places of our ancestors.**

---



~ The oldest known headstone in our cemetery bears the date "1812" — a powerful reminder that our resting grounds may be far older, and hold deeper history, than we once thought.

---

This summer, our Lands and Resources team continued important work to honour our ancestors and learn more about the history of our community. With the help of the Institute of Prairie and Indigenous Archaeology (IPIA) from the University of Alberta, they used ground-penetrating radar (GPR) to look for possible unmarked graves on the LeGoff Reserve.

They began this journey earlier in the year when the

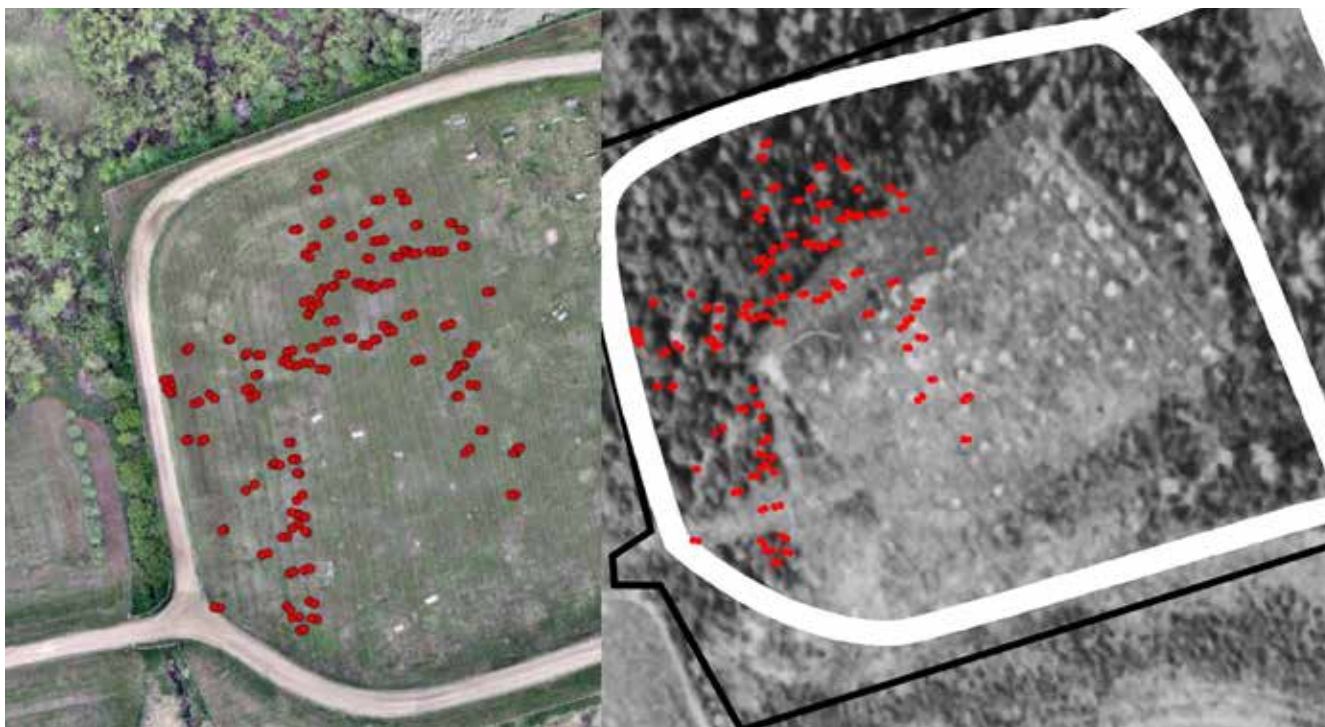
department reached out to Liam Wadsworth from IPIA. The goal was to search for the mass grave from the 1918–1919 Spanish flu pandemic and to identify any unmarked graves within our modern cemetery. With support from our members, staff, and Elders, the GPR survey took place in June 2024.

While the exact location of the mass grave hasn't been confirmed yet, (believed to be north east of the current

cemetery) the survey did find many possible unmarked graves inside the cemetery. These results match what experts expect to see when unmarked graves are present, based on national archaeological standards.

To complete the survey, the team used a new, high-resolution GPR system called the Mala Mira HDR. This tool gives very clear images of what's beneath the surface. They also used a high-

## GPR Survey Brings New Insights and a Deeper Mystery to LeGoff Cemetery (cont)



~ A side-by-side look at the unmarked graves (2024, left) and the 1946 aerial photo suggests that many of these resting places may once have been within a forested area before 1946.

accuracy GPS device, which allowed them to map each possible grave within a few centimetres of precision.

Some possible graves were found along the edge of the cemetery or even beneath the gravel road, while others were outside the original cemetery boundaries seen in early aerial photos. Over time, the land and layout of the cemetery has changed dramatically, which could explain these findings. Interestingly, some of the possible unmarked graves line up with grave markers visible in old aerial photos, giving more confidence in the results.

There are still questions we hope to answer — such as exactly where the 1918–1919 mass grave is located, why some graves appear outside the original boundaries, and when and why the cemetery may have been renovated in the 1970s or 1980s.

If you or someone in your family remembers when the cemetery was changed or expanded during that time, we would love to hear from you. Your stories and memories can help us piece together this important part of our community's history.

Our next step will be to re-mark the unmarked graves with new markers later this year. We also hope to invite the IPIA team back in the late fall to continue scanning for the mass grave.

This work is about more than technology — it's about respect, remembrance, and care. Every step we take brings us closer to honouring those who came before us and ensuring their resting places are protected for generations to come.

---

## Community Information Session Update

---

**As Cold Lake First Nations moves forward with strategic planning, governance improvements, and significant community projects, this fall's updates reflect steady progress and a continued commitment to financial responsibility, transparency, and member engagement.**

---



*– New Chief and Council listening to the many concerns of our community members.*

This fall has been a season of connection and progress for our Nation. Through our recent community information sessions — held on September 19 at the Administration Building and on September 23 with our urban members in Edmonton — we came together to share updates, listen to feedback, and continue building our Nation's future together.

Both gatherings opened in a good way, with prayers from Elders and community members. Each meeting was chaired by Rick Janvier, who reminded us to speak respectfully, listen with openness, and focus our discussions on shared progress. The

turnout and engagement showed the strength and unity that continue to guide Cold Lake First Nations forward.

We are proud to report that Cold Lake First Nations remains in a strong financial position. Our auditors, C2H Solutions, presented the 2024–25 financial statements showing total revenues of about \$50.5 million and an operating surplus of \$14.6 million — nearly double last year's results.

Our revenues came from several key sources: \$24.6 million in government funding, \$11.7 million from Casino Dene operations, \$7.8

million in donations and own-source revenues, and \$6.3 million from investments. Our trust fund continues to grow and now stands at \$7.9 million, with no withdrawals since 2010.

Members asked thoughtful questions about how funds are allocated and requested more detail about "other expenses." We agree that transparency is essential and will explore ways to provide more detailed financial reporting, including a possible finance-focused session ahead of our Annual General Meeting on November 12–13.

---

## Community Information Session Update (cont)

---

Construction continues across the Nation as we invest in projects that support safety, housing, and recreation. In Townsite, work is underway on a covered outdoor rink and multi-use space — a \$3-million project fully funded by industry partners. The year-round facility will serve as a hockey rink in winter and a community space for volleyball, tennis, and summer recreation. Completion is expected in fall 2026.

Nearby, the Shelby & Swade Memorial Park — a new playground and splash park dedicated to Shelby and Swade Janvier — is being developed with support from FCSS and will also open in fall 2026. A new subdivision at Townsite will add four stick-built homes by spring 2026, providing high-quality housing for our members and families.

We're also advancing our Wastewater Integration Project — a \$9.1-million investment that will connect our system to the City of Cold Lake's treatment plant. This project will protect our lands and waters while improving long-term reliability for our community.

On the roads, our GeoWeb pilot project at the south end of Crooked Tree Road is testing new technology designed to strengthen surfaces and prevent washouts — an innovation

that could improve travel across all four reserves. In partnership with the City of Cold Lake, we've also applied for federal funding under the Rural Transit Solutions Program to create an on-demand bus pilot, expanding transportation access for our members.

As leadership, we continue to strengthen how we govern and serve our people. Chief and Council share responsibilities across defined portfolios, ensuring every department is supported and accountable. These include Administration and Finance, Infrastructure, Economic Development, Health, Integrated Services, Education, Housing, Lands and Resources, Language and Culture, and Community Development.

This shared model allows us to collaborate across departments on major priorities — housing, mental wellness, language revitalization, and land stewardship — ensuring that no issue is addressed in isolation.

We have also begun work on our 2025–2028 Strategic Plan, led by MNP. The process will include community surveys, Elder engagement, and sessions both on- and off-reserve to ensure every member has a voice in shaping our Nation's direction.

At the same time, we are re-establishing our Election Code Revisions Committee to update and clarify our Nation's electoral laws. Volunteers are welcome to join this important effort.

Our new Membership Mondays program gives members the chance to meet one-on-one with Chief and Council to ask questions, share ideas, and discuss concerns. To ensure accessibility for all, one Monday each month will be held in Edmonton, allowing our urban members to connect directly with leadership.

Language and culture remain at the heart of who we are. We are committed to revitalizing Dene Yati, supporting cultural programming, and investing in youth education to ensure future generations grow up proud of their identity, connected to their language and their land.

From financial growth and infrastructure investment to cultural renewal and community engagement, our Nation continues to move forward with unity and purpose. This fall's gatherings reminded us that when we come together in a good way — grounded in respect and guided by culture — we build the foundation for a stronger future for all Cold Lake First Nations members.

---

## CLFNS Joins in Launch of First Nations Financial Markets

---

**A historic partnership advancing economic sovereignty and long-term growth for Cold Lake First Nations.**

---



~ Clean, crisp, Canadian money.

We are proud to share an exciting milestone — our Nation is one of six Alberta First Nations partnering in First Nations Financial Markets (FNFM), a majority First Nations-owned investment firm that officially launched on September 2nd.

This launch represents a powerful step forward in strengthening economic sovereignty and creating meaningful opportunities for our people and future generations. FNFM will serve as a bridge between First Nations, corporate Canada, and government issuers, working to advance economic revitalization through partnership and investment.

As an investment firm, FNFM is designed to help public companies, governments, and other issuers raise

capital, drive growth, and unlock new opportunities. By investing our Nation's capital through FNFM, we are setting the foundation for sustainable, long-term benefits that will flow back into our community. The returns generated will be reinvested into community-driven economic development, supporting greater resilience, diversification, and long-term prosperity for our members.

FNFM's launch has already gained national attention, with coverage in major outlets such as the Edmonton Journal, Calgary Herald, and Financial Post. This recognition highlights the importance of this initiative — not just for our partner Nations, but for all First Nations across Canada seeking to build

economic self-determination.

Together with our partner Nations — Athabasca Chipewyan, Fort McMurray 468, Heart Lake, Sawridge, and Whitefish Lake #128 — we are building a new pathway for First Nations participation in Canada's financial future. FNFM represents both a proud achievement and a transformative opportunity to strengthen our collective economic power and ensure that First Nations play a defining role in shaping the economy of tomorrow.

We look forward to the positive change this partnership will bring to our Nation and invite you to learn more about FNFM at [www.fnfm.ca](http://www.fnfm.ca).

COLD LAKE FIRST NATIONS ANNUAL

# HALLOWEEN CANDY DRIVE-THRU



**OCTOBER 31**  
CLFNS ADMINISTRATION BUILDING PARKING LOT  
2PM - 4PM

**TRIZ**  
**Seven Lakes**  
Caldwell Services  
**CASINO**  
**DENE**  
**primo dene**  
group of companies  
**HOTEL DENE**  
A SORPHEME GROUP  
**COMEC**  
ENERGY SERVICES

## Social Development Calendar

MOZ	TUE	WED	THU	FR	SAT	SUN
		1	2	3	4	5
		Intake <b>Sharing Circle</b> 12pm-3pm	Intake <b>Sharing Circle</b> 12pm-3pm	No Intake Admin day		
6	7	8	9	10	11	12
Intake ISC Stats 1-4  <b>Life Skills</b>	Intake  <b>Life Skills</b>	Intake E -Bay 9am-12pm  <b>Life Skills</b>	Intake Case Load meeting 1pm-3pm <b>Life Skills</b>	No Intake Admin day  <b>Life Skills</b>		
13	14	15	16	17	18	19
STAT Holiday Office Closure	Intake  <b>Life Skills</b>	Barriers  <b>Life Skills</b>	<b>Disability Supports</b> 9am-4pm <b>Life Skills</b>	No Intake Admin day <b>Life Skills</b>		
20	21	22	23	24	25	26
Intake  <b>Life Skills</b>	Intake  <b>Life Skills</b>	Intake E -Bay 9am-12pm <b>Life Skills</b>	Intake  <b>Life Skills</b>	No Intake Admin day <b>Life Skills</b>		
27	28	29	30	31		
Intake  <b>Life Skills</b>	Intake  Case managers Gone for training <b>Life Skills</b>	Cheque Day  Case managers Gone for training <b>Life Skills</b>	No Intake  Case managers Gone for training <b>Life Skills</b>	No Intake Admin day  <b>Life Skills</b>		

## Youth Center Calendar

Children 12 and under need to be accompanied by a parent or guardian. Drop in hours are 1pm - 8pm. Weekend hours are 1pm - 7pm.  
Please call 780-694-7111 to register for programs. Please note all activities are subject to change without notice.

# English Bay Center Calendar

Monday Dzj'are	Tuesday Nakedzjine	Wednesday Tahdzjine	Thursday Djdzjine	Friday Luts'akdél dzjine
		1 Kim Employment & Training 10-12 PM Librarian 11-1 PM Angela psychologist 9-12 PM Samantha A. Dene Wellness 10-12 PM Education 10-12 PM Soup & Bannock Noon	2 Food Pantry 10-1	3 Breakfast at 10 Family Fire Night 5-6:30 PM (Bannock on a stick, smores, fire strolling)
6	7 Denesyljné Drumming 6-7 PM Beading Night with Tyra 4-6 PM Dentalium Shell Earrings Workshop 6 Spots	8 Kim Employment & Training 10-12 PM Librarian 11-1 PM Angela psychologist 9-12 PM Samantha A. Dene Wellness 10-12 PM Education 10-12 PM Soup & Bannock Noon Denesyljné Language Class 1-3 PM <i>Bus to Youth Center 4:30-7(Halloween Makeup)</i>	9 Food Pantry 10-1 <i>Bus to Youth Center 4:30 (coloring)</i>	10 Breakfast at 10 No School Day Activities & Workshop with Jody
13 <b>Thanksgiving Offices Closed</b>	14 Denesyljné Drumming 6-7 PM Beading Night with Jasmin 4-7 PM Intro: Basics of Quiltwork	15 Kim Employment & Training 10-12 PM Librarian 11-1 PM Angela psychologist 9-12 PM Samantha A. Dene Wellness 10-12 PM Education 10-12 PM Soup & Bannock Noon Denesyljné Language Class 1-3 PM <i>Bus to Youth Center 4:30 (Learn to Jig)</i>	16 Food Pantry 10-1	17 Breakfast at 10 Community Night 5-6:30 PM Baking Mini Apple Pies
20 Wellness & Support Group 5:30-6:00 PM <i>Bus to Youth Center 4:30 (Halloween Bingo)</i>	21 Denesyljné Drumming 6-7 PM Beading Night with Jasmin 4-7 PM Intro: Caribou Tufting	22 Kim Employment & Training 10-12 PM Librarian 11-1 PM Angela psychologist 9-12 PM Samantha A. Dene Wellness 10-12 PM Education 10-12 PM Soup & Bannock Noon Denesyljné Language Class 1-3 PM <i>Bus to Youth Center 4:30 (Halloween baking)</i>	23 Food Pantry 10-1 <i>Bus to Youth Center 4:30 (coloring)</i>	24 Breakfast at 10 Community Night 5-6:30 PM Halloween Candle Making & Pumpkin Carving
27	28 Denesyljné Drumming 6-7 PM Halloween Earrings or Keychain Workshop 4-7 PM	29 Kim Employment & Training 10-12 PM Librarian 11-1 PM Angela psychologist 9-12 PM Samantha A. Dene Wellness 10-12 PM Education 10-12 PM Soup & Bannock Noon Denesyljné Language Class 1-3 PM <i>Bus to Youth Center 4:30 (Beach Start)</i>	30 Food Pantry 10-1 Sober Social 5:30-7:30 PM	31 Breakfast at 10 <b>Happy Halloween!</b> 

# Dene Wellness Calendar

MONDAY	TUESDAY	WEDNESDAY	THURSDAY	FRIDAY
<ul style="list-style-type: none"> <li>CLFN DENE WELLNESS</li> <li>ENGLISH BAY CENTER</li> </ul>	!! REGISTRATION IS REQUIRED TO MAKE SURE WE HAVE ENOUGH FOOD & SUPPLIES FOR EVERYONE. PLEASE REGISTER BEFORE ATTENDING.	1	2	3
6 CLFN DENE WELLNESS WELLNESS & SUPPORT GROUP 5:30PM - 8:00PM INTERDUCTION: What Does Wellness Mean To Me		8	9	10
13	14	15	16 CLFN DENE WELLNESS SOBER SOCIAL 5:30PM- 7:30PM PAINT NIGHT	17
20 ENGLISH BAY CENTER WELLNESS & SUPPORT GROUP 8:30PM- 8:00PM Beading with Triggers & Cravings	21	22	23	24
27	28	29	30 ENGLISH BAY CENTER SOBER SOCIAL 5:30PM- 7:30PM HALF MOON WREATH	31 <b>HAPPY HALLOWEEN!</b>



☎ Cold Lake First Nation Dene Wellness: (780) 594-1471  
 ☎ Rae-ann Desjardin Cell: (780) 545-7595



YAGOLE DAYCARE PRESENTS THE 2025

# HAUNTED HOUSE

ENTRY FEE  
\$5 KIDS  
(UNDER 13)  
\$10 (14+)



# FUND RAISER

YAGOLE DAYCARE - CLFNS

**OCTOBER 20-24**  
5PM - 7PM

**OCTOBER 25-26**  
5PM - 10PM

CANTEEN ON SITE - OPEN FOR ALL AGES  
NOT RESPONSIBLE FOR SCARED STIFFS



*Cold Lake First Nations*

# FALL MARKETS



**FRIDAY OCT 10+24**  
10AM - 1PM

**CLFNS ADMINISTRATION BUILDING**

Fresh produce, baked goods, crafts + more!

**CONTACT**  
**DANIEL.MCLAUGHLIN@CLFNS.COM**  
**TO BOOK A TABLE**

The Cold Lake First Nations  
Denesųliné Language and Culture Department  
and the Education Department  
presents

# A SERIES OF TRADITIONAL ARTS AND CRAFTS FOR YOUTH

WEEK 1 (OCT 14/15): RIBBON SKIRTS  
WEEK 2 (OCT 21/22): RIBBON SHIRTS  
WEEK 3 (OCT 28/29): BEADED/TUFTED EARRINGS  
WEEK 4 (NOV 4/5): BEADED WRAP LANYARDS  
WEEK 5 (NOV 12): COOKING/CANNING

## AGES 13-19 YEARS OLD

DENE GÒDHE ALA  
9:00-3:00PM

Spots are limited. Youth must register with Mariah:  
[MARIAH.PALINRUSSELL@CLFNS.COM](mailto:MARIAH.PALINRUSSELL@CLFNS.COM)

- \*Youth must be present for both days of each week to ensure project completion
- \*Sessions may be cancelled with or without notice if strike is cancelled and school resumes
- \*Venue may change depending on availability but updates will be provided to those registered

SCREEN TEST

Mobile Mammography Screening is coming to:

## Cold Lake First Nation Health Centre

October 27 & 28, 2025

Transportation is available, call 780-594-2473



*Photo courtesy of the Alberta Cancer Foundation*

Call toll free to book an appointment:

**1-800-667-0604**

To learn more visit: [screeningforlife.ca/breast](https://screeningforlife.ca/breast)

*If you're 45 to 74 years of age, have a mammogram every 2 years or as decided by you and your healthcare provider. No referral needed.*



Primary Care  
Alberta



Screen Test

*Post until: October 27, 2025*



# JOB FAIR

## COLD LAKE ENERGY CENTRE

5513 - 48 Avenue

**THURSDAY**

November 6, 2025



**TIME**

10AM TO 7PM



**CONTACT**

780-201-7755



[tracey@employabilities.ab.ca](mailto:tracey@employabilities.ab.ca)

bussing is available for CLFN Members from Town site and E-Bay generously provided by Primco Dene



**primco dene**  
group of companies

The Province of Alberta is working in partnership with the Government of Canada to provide employment support programs and services.



# ELDERS SOCIETY MEETING

**TUESDAY, OCTOBER 21ST**

**10:00 AM – 12:00 PM**

**LUNCH SERVED AT 12:00 PM**

**ADMINISTRATION BUILDING**

**JOIN US FOR:**

- Sharing information about the Elders Society
- Discussion about the Elders Christmas Dinner



## ALL ELDERS WELCOME!

Come connect, share, and  
enjoy a meal together.

# DROP IN TUTORING



## All Ages

- ★ Homework Help
- ★ Studying Skills
- ★ Literacy Support



Located at CLFN Youth Center



5 p.m - 9 p.m.

**SEPTEMBER**

11th

15th

25th

**OCTOBER**

2nd  
9th

16th

23rd

30th

**NOVEMBER**

6th

13th

20th

27th

Contact [rootedlearningteam@gmail.com](mailto:rootedlearningteam@gmail.com) or the Youth Center for more information

# BOTTLE DRIVE

**HAPPENING NOW UNTIL HALLOWEEN!**



The Yagole Daycare is excited to announce their Bottle Drive Fundraiser!

Representatives will be collecting bottles in the community

📍 Donations can also be dropped off at the daycare

All proceeds will go toward programs and activities for the children in our care.

Every bottle donated makes a difference—please spread the word and encourage your friends and family to join in!



# CLFN HEALTH CENTRE

## Parenting Course

**October 14, 15 & 16**  
**(9:30-12PM)**

- ACTIVE PARENTING : FIRST FIVE YEARS

FOR MORE INFO PLS CALL.  
RITA M.C.H  
780-594-2473 EXT. 2204

LUNCH PROVIDED

PRIZE:  
DOOR PRIZE


# It's Not Right

## Care for Older Adults



### It's Not Right: Friends, Family, & Neighbours

 October 14, 2025

 10:00- 12:00 am

 CLFN Administration Bldg

Lunch to Follow

#### ABOUT THE WORKSHOP

Join us for a dynamic presentation and meet others who care about the well-being of older adults. Presentation teaches bystanders of all ages the warning signs of elder abuse and what YOU can do. True-to life scenarios are used to facilitate discussion and to build skills



#### WORKSHOP OUTCOMES

- Recognize warning signs of abuse
- Recognize ageism
- Respond safely and supportively
- Little things YOU do can make a big difference!
- Find help in your community

#### Space is limited

To Register call or text  
780 545 9382 or email  
[jody.lehrturco@clfns.com](mailto:jody.lehrturco@clfns.com)

Learn how the little things YOU do can make a BIG difference to change attitudes and behaviours to stop abuse of older adults.



[www.albertaelderabuse.ca](http://www.albertaelderabuse.ca)



# COMMUNITY BBQ



**JOIN US FOR A FREE BBQ**

**October 23rd, 2025 11:30 AM to 1:30 PM**

**COLD LAKE FIRST NATIONS**

**Band Office**

**CELEBRATING COMMUNITY  
PARTNERSHIPS!**



PORTAGE  
COLLEGE



# Open House

Cold Lake Campus

October 22, 2025 | 6:00pm to 8:00pm

## FREE MEAL AND FREE APPLICATION\*

We offer a variety of programs including Addictions Counselling, Aircraft Structures Technician, and Pre-Health Sciences. Come check out our Open House, where you can connect with advisors, ask questions and find out which program is the perfect fit for you.

\*Limit One Free Application per student

Contact us at 1-866-623-5551 or scan the QR code for more information or to sign up for our next Open House event!



# Emergency Contact List

**POLICE EMERGENCY CALL 911**

**HEALTH LINK  
DIAL 811**

**Cold Lake R.C.M.P.  
24 Hours 780-594-3301  
Office Hours 780-594-3302**

**Victims Services  
Dave Zimmerman 780-594-3302 ext.3**

**Emergency Medical Services  
911**

**Cold Lake Healthcare Centre  
780-639-3322**

**Bonnyville Health Centre  
780-826-3311**

**CLFN Emergency Management  
780-594-7184**

**CLFN Health Centre  
780-594-2473**

**Dene Wellness  
780-594-1471**

**FCSS  
780-594-7186**

**Youth Center  
780-594-7111**

**John N.A. Janvier School  
780-594-3733**

**Social Development  
780-594-6723**

**Public Works  
780-594-1073**

**Dangerous Goods  
24 Hours 1-800-272-9600**

**Poison Centre 24 Hours  
1-800-332-1414**

**CANADA SUICIDE PREVENTION  
988**

**Power Outages Atco Electric  
1-800-668-5506**

**Gas Emergencies Northeast Gas  
780-826-4002**

**Alberta One-Call  
1-800-242-3447**

**Petro Canada Station  
780-594-1661**